



Volume 22

Number 11

November 2009

Next Meeting Details
Topic: <i>Birdhouse Ornaments</i>
Speaker: Bill Leclerc
Date: 5 November 2009
Bill will give us some insight into ornamental birdhouses he creates from what is mostly waste wood pieces. Please join us for this entertaining and useful demo on a simple and delightful approach to these wonderful gift pieces.
Learn & Turn
5:00 to 6:25 p.m.
Topic <i>Turn an Elegant Twist Pen</i>
Leader: Jerry Sambrook and Gene Spadi
Jerry and Gene will step you through the process of making a fine writing instrument for you or a friend to enjoy. They will also discuss the myriad of other desk items that can be made with the same techniques.

Video Librarian: Ray Asselin

Book Librarian: Roger Boisvart

Webmaster: Dave Eaton

Wood Swap Coordinator: Gene Spadi

We are, as of this writing, still in need of volunteers for the following:

External VP- Coordinates CNEW events outside the club, such as the upcoming Woodturning Show. Schedules outside presenters for demos at club meetings. Other club duties as they may apply.

Treasurer- Collect dues from members, pays club expenses, monitors club finances. Other club duties as they may apply.

Club Steward- Responsible for making sure the meeting facility is prepped for meetings, demos, Learn and Turn, etc. Other club duties as may apply.

While I have great enthusiasm for our group, I can't help but express my disappointment that no one stepped up to the plate at the last meeting to take on the Treasurer position. This is your club, members, and as such we need people to give back by helping out by being an officer for a year. The work is not that long nor difficult, and there is great opportunity to grow and become more acquainted with other members while serving as an officer. Please consider all that you get from the club in the way of demonstrations, access to videos and books, learning from other turners and sharing ideas. In light of what the club offers the members, a one-year term as an

Presidents Message

Mike Stone

Our October meeting was well attended with many interesting items brought in for Show and Tell. Thank you to everyone who contributed! Dave Eaton did double duty as both the Learn and Turn demonstrator and also doing the Demo for the night. Great job Dave, very informative and entertaining as usual!!!

Our November meeting will be fun filled, with a Learn and Turn by Jerry Sambrook and Gene Spadi on making an elegant twist pen, and a demo by Bill LeClerc on making birdhouse ornaments. Both great topics, as holiday gift items loom large for us all!!

We will also finalize our slate of officers for 2010. As of now the slate of officers is:

President: Rick Angus

Internal VP: Chris Durkee

Secretary: Tim Elliot

Newsletter Editor: Joe McGill

Photographer: Mary McGuire

Wood Store: Ray Boutotte

Table of Contents	
President's Message	1
Minutes of the September Meeting	1
Club Officers Listing	1
CNEW Mourns the Loss of Joe Harbey	2
Demo: Art Bodwell	
Stacked Laminated Vessels	2
Show and Yell	5

CNEW Skew: Volume 22; Number 11, November 2009

officer is a small favor in return.

We will address the remaining officer positions as the first order of business Nov 5th. Understand; we will not move forward with any other business, show and tell, or demo until the three positions above have a nominee. I am confident that at least 3 capable members will fill those slots early so that we may continue with an educational and fun evening.

Until then: be well, share what you know with others, and above all, have fun!

Minutes of October Meeting *Tim Elliott*

Minutes of CNEW meeting 10/01/2009

Longtime member and former CNEW president Joe Harbey passed away last month. The club made a memorial donation to St Jude's Children's Research Hospital in his honor, and we observed a moment of silence at the beginning of the meeting.

John Berke gave a treasurer's report

beginning balance: \$5643

credits: \$69

debits: \$585

ending balance: \$5126

Of our expenses, \$510 was our booth fee for the November Festival of Crafts, which will be paid back from show receipts.

Jerry Sambrook summarized upcoming external events. The website has more details on these.

October 18: Spirit of Wood show at Middlesex Community college in Bedford MA

November 28-30: Festival of Crafts (Reid Gilmore will again lead our participation. Please plan to sign up at next month's meeting)

October 17: Turning demo at the Woodcraft store in West Springfield (contact: Jerry Sambrook)

October 17: Fitchburg forge-in (contact: Roger Boisvert)

Jerry has also been in touch with Bad Dog Burls in Belchertown, MA. He will try to arrange another tour of their facility on a weekend in November.

The company that formerly ran the Woodworks show in West Springfield is out of business, but the event seems to have been taken over by another company under the name of "Woodworking Show". Jerry is still investigating how we might participate. Date would be the weekend of January 9/10.

The following new members/visitors were recognized:

- Charlie Burnham

- Jim Beardley

Jerry Sambrook and Dave Eaton have been in touch with the organizers of the AAW symposium to be held June 18-20 2010 in Hartford, CT. Several area chapters are pooling resources to help provide volunteer labor and meet other symposium needs - working groups are beginning to form. Details are still being worked out, but there is a possibility that CNEW may get some money back from if we make a good showing. Watch for more details via e-mail.

Webmaster Dave Eaton says the "update your info" section of our webpage is currently broken. He is working on it, but in the meantime, any edits you would like to see may be e-mailed to him. He also reminded us that the website now hosts personal photo galleries for each member - you can upload your own photos and manage it yourself. This is a relatively new member benefit and we are all encouraged to participate.

There is a new virtual AAW chapter on segmented turning. More info is available at www.segmentedwoodturners.org.

oe McGill expects delivery of a new 3250 lathe on Columbus Day weekend and would like help getting it installed inside his workshop.

CNEW's ongoing Mentor program is an underused club resource. There is a mentor list on www.cnew.org - these mentors invite you to contact them about sharing some shop time and learning something new.

We will have our annual officer elections at the November meeting. We have nominees for the following offices:

- President: Rick Angus

2008 Club Officers Contact Information		
President	Mike Stone	president@cnew.org
VP, Internal	Chris Durkee	internal_vp@cnew.org
VP, External	Jerry Sambrook	external_vp@cnew.org
Secretary	Tim Elliot	secretary@cnew.org
Treasurer	John Berke	treasurer@cnew.org
Newsletter	Rick Angus	newsletter_editor@cnew.org
Video Librarian	Jerry Sambrook	video_librarian@cnew.org
Book Librarian	Roger Boisvert	librarian@cnew.org
Webmaster	Dave Eaton	webmaster@cnew.org
Photography	?	photography@cnew.org
Wood Swap	Gene Spadi	
Freedom Pens	Gene Spadi	
Project Goodwill	Charlie Croteau	

CNEW Skew: Volume 22; Number 11, November 2009

- Internal VP: Chris Durkee
- External VP: Jerry Sambrook
(Note: since the last meeting, Jerry Sambrook's nomination acceptance has been withdrawn, *ed.*)
- Newsletter editor: Joe McGill
- Secretary: Tim Elliott
- Photography: Mary Maguire

We currently have no nominee to replace Jon Burke as treasurer. Please consider whether you would be willing to hold this office for 2010.

We voted to purchase a CNEW camera - Mike Stone will find something appropriate for \$200 or less.

Frank White is part of a regional studio tour this weekend.

Several CNEW officers will meet again soon with current Worcester Center for Crafts management to assess whether we might go back to having our monthly meetings there. Until then, we do not know what wood shop facilities remain or what it might cost us to use their space.

Springfield Demo

At the invitation of Robert Ford and Steve Rice of the Springfield Woodcraft, CNEW advertised for the club and made a few holiday ornaments as well. Chris Durkee, Richard Hunt, Bill LeClerc and Jerry Sambrook represented CNEW and produced 15 ornaments—all donated to US troops overseas.



Birdhouse Ornaments.



Jerry Sambrook at the lathe.



Bill LeClerc ready to make a birdhouse.



Finished work.

Demonstration: Lidded Endgrain Box

Dave Eaton

Dave Eaton did double duty tonight as leader of both Learn 'n Turn and program demonstrator. His demonstration was of an endgrain lidded box made in the traditional style.

Dave started with an octagonal billet of cherry (if my memory serves me well) mounted between centers. He began by cutting tenons on either end in preparation for chuck-mounting.

Following that, he rough cut the billet into a cylinder and made a parting cut to separate the lid from the base. In this case, the lid was shorter than the vessel.

Dave Eaton



These ends get tenons for grabbing with the chuck.



The crowd readies for Dave's wisdom.



Cutting a tenon on the right.



Cutting the tenon on the right—detail.



Slicing in two with a narrow parting tool.

Dave placed the lid portion in the chuck and cut the lid's inside shape leaving a square mortise inside the lid. He then rough cut the outside shape. The inside was finished at this point.



Removing the lid after finishing the inside.



Turning the base with the lid attached to allow easy visualization of the outside shape.

CNEW Skew: Volume 22; Number 11, November 2009

Dave cut a tenon the base and jam fitted the lid to the base to allow him to cut the outside to desired shape. The lid loosened a bit so he improvised with his left hand—holding the lid in place.



Cutting the outside shape with the right hand and gouge while holding the lid on with the left hand.

Dave then reassembled the box and fine tuned the outside shape using a jam fit of the lid to the vessel base. A paper towel took up the slack of a slightly loose lid.



Lid reassembled to the vessel; turning the outside with tailstock support.



Refining the outside using two hands for control.



Refining the outside.



Now to remove the excess stock from inside the box.



The final touch to the lid.



Truing the box tenon.



Assessing!



Beginning the hollowing process.

The box was hollowed with some bevel-rubbing cuts with the gouge followed by traditional scraping from center to rim (with the grain).



The flute of the gouge was used to scrape-cut the inside.



Undercutting the bottom.

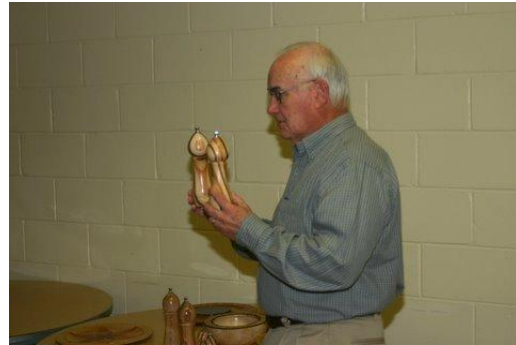


Verifying the undercut.

The box was finished by jam chucking the vessel bottom into a waste block and undercutting the bottom.

Show & Tell:

Art Bodwell



Artfully laminated block turned into pepper and salt mills



Peppermill Saltmill Sets

Dave Eaton



Dave with a box much lit the one that he made tonight.



Lidded box

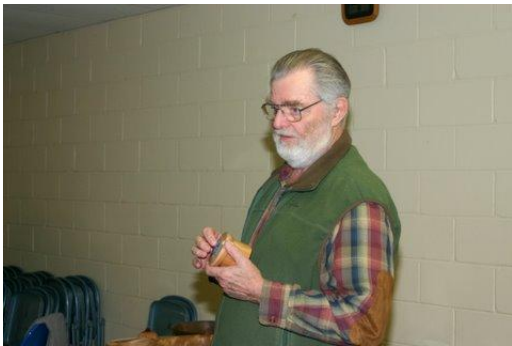
Alan Gilburg



Two birch bowls



Linden Bowl with decoration by pyrography and gesso.



Salt Vault



Salt Vault

Reid Gilmore



Linden Bowl with decoration by pyrography and gesso.



Platters with marble and epoxy inlays, collaborative with wife Beth



Birch Bowls



Bandsawn inlay held with epoxy.

Jerry Sambrook



Platter with geometric pattern in multiple woods



Big Pen



The Big Pen



Big pen and one of Jerry's usual creations.



Size comparison

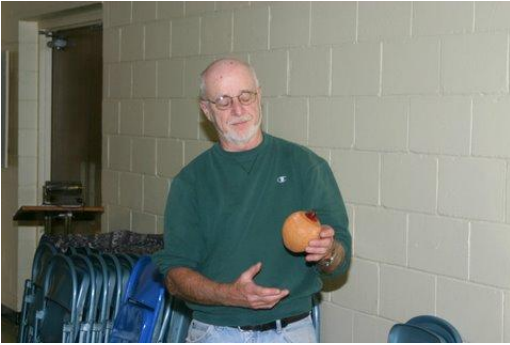
Frank White



Spalted maple bowl with carved rim.



Cherry and bloodwood vase with textured surface.



Carved and textured.



Walnut Bowl.



Ambrosia Maple Bowl




Finished recently -- roughed out 9 years ago


The CNEW Skew

Central New England
Woodturners
c/o Jon Berke
22 Walden Way
MilfordMA 01757
Phone: 508 259 8884

e-Mail:
treasurer@cnew.org



Central New England Woodturners
*A Chapter of the American Association of
Woodturners*



Find us on the web @ www.cnew.org

Membership Application

To join or renew membership, please complete this form and a check made payable to CNEW and bring it to a CNEW meeting or mail it to:

Treasurer, Central New England Woodturners
c/o Jon Berke
22 Walden Way
MilfordMA 01757

Annual dues: \$20 including e-mail delivery of newsletter; \$25 for postal delivery of newsletter.

Name: _____
Street: _____
City: _____
State: _____ & Zip: _____
e-Mail: _____

Please check appropriately below

- New Member
- Returning Member
- e-Mail Newsletter (\$20.00)
- Snail Mail Newsletter (\$25.00)

Please let us know of your interests:

How long have you been turning? _____

What programs would you like to see at meetings? _____

Would you like to demonstrate at a meeting? Yes/No If so, what topics do you offer? _____
